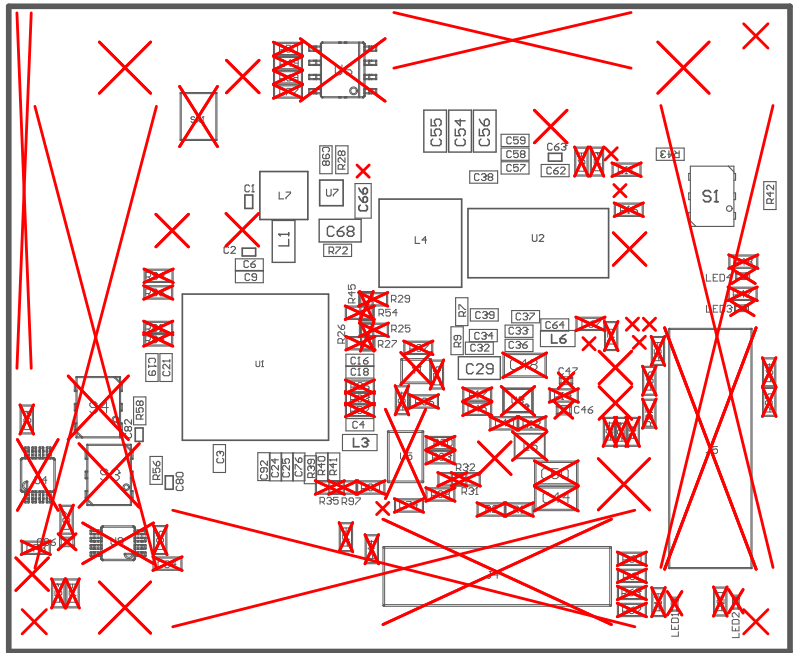
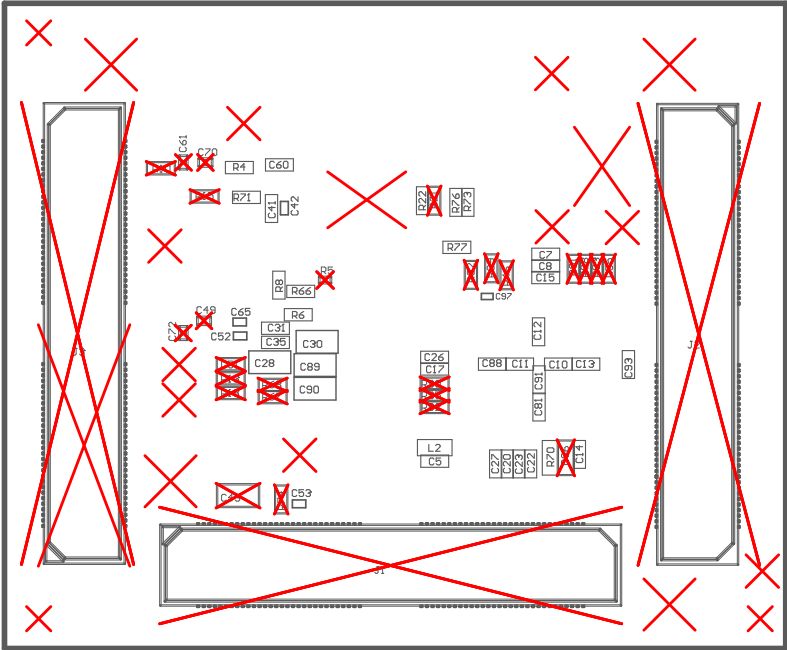


- Z24 ☒ These assemblies must comply with workmanship standards IPC-A-610 Class 2, unless otherwise specified.
- Z23 ☒ These assemblies must be clean and free from flux and all contaminants. Use of no clean flux is not acceptable.
- Z22 ☒ These assemblies are ESD sensitive, ESD precautions shall be observed.
- Z21 ☐ Install label in silk-screened box after final test. Text shall be 9 pt font. Text shall be per the Label Table in the PDF schematic.



COMPONENTS MARKED 'DNP' SHOULD NOT BE POPULATED.
ASSEMBLY VARIANT: F29 Required Circuitry Only

PCB VIEWED FROM TOP SIDE	BOARD #: MCU144	REV: A	SUN REV: Not in version control
	TID #: N/A		
PLOT NAME = Top Assembly Drawing	GENERATED : 10/30/2025 11:57:00 AM		TEXAS INSTRUMENTS



COMPONENTS MARKED 'DNP' SHOULD NOT BE POPULATED.
ASSEMBLY VARIANT: F29 Required Circuitry Only

PCB VIEWED FROM BOTTOM SIDE	BOARD #: MCU144	REV: A	SUN REV: Not in version control
	TID #: N/A		
PLOT NAME = Bottom Assembly Drawing	GENERATED : 10/30/2025 11:57:00 AM		TEXAS INSTRUMENTS